



2007-2008

Annual Report to the Community



2007-2008 Annual Report is published by
Jeffco Public Schools Communications Services.

Lynn Setzer, Executive Director, Public Engagement/Communications Services

Marlene Desmond, Communications Manager, writer

Bill Bond, Photographer

Nada Giunta, Graphic Designer

welcome

This Annual Report was created to provide the community with a look at the highlights of the 2007-08 year, to review the district's performance and to demonstrate our success towards meeting the district's goal of providing a quality education that prepares all children for a successful future. Some of the information presented here is required by law.

our mission

To provide a quality education that prepares all children for a successful future.

our values

- Integrity
- Valuing People
- Teamwork
- Exemplary Performance



Table of Contents

District Leadership.....	2
Strategic Planning	4
District Profile	5
Academic Achievement	9
Safety and Security	11
District Budget	12
Bond Projects	14
Assessments	15
School Accountability Ratings	17
Test Scores and Performance Ratings.....	22



district leadership

Superintendent's Message



2007-08 was another year of significant achievement for Jeffco Public Schools. We introduced a new aligned curriculum, strengthened graduation requirements, implemented more teacher training, expanded alternative education offerings and improved our facilities. Our students continued to excel as demonstrated by CSAP scores, once again exceeding the state performance in all content areas at every grade level. Jeffco students also showed an improvement from 2007 scores with gains in reading, math and science.

Our schools, and the district, focus on continuous improvement. While our community should be proud of all of the accomplishments of students and staff, we still have important work ahead. Our schools are focused on narrowing achievement gaps, improving our graduation rates, and ensuring that every student is challenged every day.

Jeffco Schools include an incredibly talented staff. Our teachers, our support staff and our leadership are all committed to our essential mission of student achievement. While we have limited resources, we will continue to refine the ways in which we manage our funds. We will continue to implement the Budgeting for Results process to develop a budget that targets resources to most effectively achieve our mission of providing a quality education. Our staff members are relentless in their commitment to Jeffco Schools and in their commitment to Jeffco's children. We invite the community to join with us as we continue to improve each year.

I want to thank our community for their continued support and present this Annual Report to demonstrate our continuing progress towards our goal of providing a quality education that prepares all children for a successful future.

Sincerely,

A handwritten signature in black ink that reads "Cynthia Stevenson". The signature is written in a cursive, flowing style.

Cindy Stevenson, Superintendent



Message from the Board of Education

It is with pride that we share with you this Annual Report, which highlights a few of the accomplishments and achievements of Jeffco Public Schools.

Looking back on the 2007-08 school year, we are struck by the progress of our schools in another year marked by a struggle to find resources to meet the needs of our students. These students, who will enter a changing job market, must now be prepared for jobs that mostly do not exist today and they must learn how to solve problems we cannot foresee. Never before has the school district been challenged in this way. During the year, the Board of Education was committed to finding new ways to improve education in general, and the district specifically. We have been gratified by the number of people who have joined us in this cause. Our work has taken us into the community and in front of the state legislature and we have found many people who are equally committed to the academic success of all students. They recognize that everyone benefits, directly or indirectly, from good public schools and that we all share the responsibility for the education of the community's children.

As we hope will be apparent in the pages that follow, Jeffco Public Schools is working as a community partner to provide a quality educational system and be a good steward of the taxpayer's funds.

Sincerely,
The Jefferson County Board of Education

Community Engagement

The Jefferson County Board of Education feels strongly that the success of the school district and our students depends on the support and input from the entire community. In addition to regular meetings, which are open to the public, during 2007-08 the Board participated in many community meetings to further reach the community. Board members also frequently visit schools and classrooms.

Send written correspondence to the Board of Education to:
Jefferson County Public Schools
P.O. Box 4001
Golden, CO 80401-0001

The Board can be reached via e-mail at board@jeffco.k12.co.us. Visit the Board of Education Web page at: <http://www.jeffcopublicschools.org/board/index.html>



Scott Benefield - Dist. 1

Sue Marinelli - Dist. 2

Dave Thomas - Dist. 3

Jane Barnes - Dist. 4

Rick Rush - Dist. 5

About the Board of Education

The five members of the Jefferson County Board of Education are elected by voters to four-year terms and serve without pay.

The Board is a policy making body with powers and duties set by state law. They are responsible for policy related to educational planning, staff, school facilities, finances and communications. Board meetings are open to the public unless otherwise specified. Meeting schedules and minutes are available on the district's Web site.

strategic planning



GOALS

- All students graduate prepared for continued learning and the world of work in the 21st Century.
- All employees are accountable for a high performing organization.

Strategic Planning Advisory Council

The Strategic Planning Advisory Council (*SPAC*) is the district's advisory group composed of Board of Education members, district leadership, representatives from the employees' associations, parent representatives, as well as citizen and parent leaders from a variety of stakeholder groups. The SPAC holds monthly meetings to advise the district on strategic direction and student achievement.

SPAC Accomplishments for 2007-08

- Examined CSAP results and the community's role in improving student achievement.
- Reviewed the Strategic Plan and revised high school graduation requirements.
- Identified merits of three of the state's P-20 Committee recommendations that focused on increasing at-risk child preschool participation, the phase-in of full day kindergarten, and deploying additional counselors to curb dropouts.
- Participated in a presentation, along with school accountability chairs, principals, and PTA presidents, which outlined Jeffco Public School's technology vision as well as providing updated information on district technology efforts.
- Explored technology equity issues in the district.
- Considered pay for performance issues.
- Provided input on the district budget.

SPAC also participated with the Board of Education in a public engagement session focused on these questions: *What skills will students need for jobs we don't know will exist? How can we tell if a child is a continual learner? What does a global perspective mean to you?*



district profile

Our Students

Jeffco Public Schools strongly supports a diverse student community. Our students represent many ethnic and social backgrounds and they have many things in common including the need to receive a quality education that will ensure they become wise, skilled and civic-minded citizens.

American Indian/Alaska Native	1%
Asian or Pacific Islander.....	4%
Black.....	2%
Hispanic.....	19%
White	74%
Male.....	51%
Female.....	49%

*District Graduation Rate.....	76%
*Neighborhood High School Graduation Rate	84%
*Neighborhood High School Completion Rate	87%
*Dropout rate	4%
Expulsions	251
Suspensions	6,231
Attendance rate	95%
Students qualifying for free and reduced lunch.....	25%

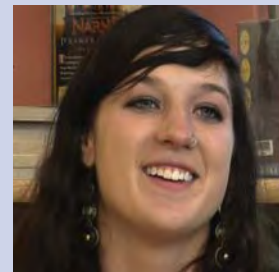
** Figures as of 2006-07. The Graduation Rate and the Completion Rate are calculated as a percent of those who were in membership and could have graduated or completed school over a four-year period. The Completion Rate is the number of students who graduate, receive a GED, or receive other designation of high school completion.*

Sources: Jeffco Public Schools and the Colorado Department of Education.

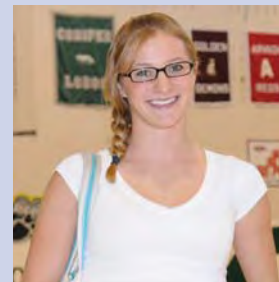
Total Student Enrollment 84,796

**As of 2006-2007*

Sources: Jeffco Public Schools and the Colorado Department of Education



Cornelia Peterson, a senior at Conifer High School, received a Scholastic Art & Writing Gold Award.



Conifer High School senior Emily Blok was named the 2008 Gatorade Colorado Girls Track and Field Athlete of the year.



The Pomona High School Arts and Humanities Program received the 2008 Colorado Creative Schools of Excellence Award by THINK 360, the leading statewide provider of arts education programs and services in Colorado.



The Evergreen High School Cheerleaders and their coach Tammy Dufford received the 2008 National High School Spirit of Sports Award.

district profile *continued*

Our Schools

Jeffco Public Schools is the largest school district in Colorado.

Number of Schools

- 94 elementary schools
- 20 middle schools
- 17 high schools
- 9 option schools
- 13 charter schools

Target Average Class Size

- 24:1 kindergarten
- 20:1 first, second & third grade
- 24:1 fourth grade
- 28:1 fifth & sixth grade
- *28:1 middle & high school

**Class size varies depending upon subject*



U.S. News and World Report Magazine ranks D'Evelyn Junior/Senior High School at number 62 on the list of top 100 Best American High Schools for 2008



Newsweek Magazine lists Lakewood High School as one of the top high schools in Colorado and 108th in the nation

State funding per pupil \$6,501.04



district profile *continued*

Our Teachers

Jeffco Public Schools teachers are highly qualified. Many have advanced degrees and several have earned national and state recognition.

Professional Qualification	% of Teachers
Bachelor's Degree Only	41.24%
Master's Degree	57.33%
Ph.D.	1.14%

Licensed	% of Teachers
Emergency	0%*
Initial	16.7%

*Based on 4,115 total regular classroom teachers

The federal No Child Left Behind (*NCLB*) legislation places a strong emphasis on having a highly qualified teacher in every classroom. In general, NCLB defines a highly qualified teacher as one that is fully licensed by the state and endorsed in the subject area and who demonstrates competence in the content areas taught.

Teachers Highly Qualified in the District					
School Year	2003	2004	2005	2006	2007
Percentage Highly Qualified	93.77%	97.17%	96.36%	99.88%	99.10%
Target Percentage	-	95.83%	97.91%	100%	100%
Target Made	-	Yes	No	No	No

Classrooms in the District Taught by Highly Qualified Teachers					
School Year	2003	2004	2005	2006	2007
Percentage Highly Qualified	94.06%	98.34%	97.11%	99.91%	99.47%
Target Percentage	-	96.02%	98.01%	100%	100%
Target Made	-	Yes	No	No	No

Classes Taught by Highly Qualified Teachers in the District by High and Low Poverty		
	High Poverty Schools ¹	Low Poverty Schools ²
Percentage in District	99.39%	99.49%
Percentage in State	96.98%	98.02%

Source: Colorado Department of Education.



Cheryl Mosier of Columbine High School was honored with a Presidential Award for Excellence in Mathematics and Science Teaching.



Bear Creek High teacher Tammy Ahmed, Coronado Elementary School teacher Karen Callahan and O'Connell Middle School teacher Jody Slavick were honored with a 2008 My Teacher, My Hero Award.

¹ Schools are ranked from highest to lowest based on their free and reduced lunch eligibility counts. High poverty schools are the 25% of schools with the highest poverty rate.

² Low poverty schools are the 25% of schools with the lowest poverty rate, as measured by free and reduced lunch eligibility.

district profile *continued*

Our Staff

In schools:

Teachers	4,820
School principals and assistant principals.....	301
Nurses, psychologists and social workers	379
Counselors	138
Library media specialists	140
Classroom aides (<i>working with special needs children</i>)	425
Health clinic aides	121
Educational assistants.....	1,128
Tutors	143
School secretaries.....	403
Preschool teachers and child care workers	325
Charter school staff	681
Campus supervisors.....	70

Supporting schools:

Central administrators	
Resource, Curriculum specialists, Project coordinators.....	88
Licensed administrators	57
Non-licensed administrators	42
Central secretaries	205
Professional staff.....	172
(<i>department managers, technology staff, etc.</i>)	
Support staff.....	1,129
(<i>facility maintenance, custodial, equipment repair, food services, insurance, etc.</i>)	
Bus drivers and transportation personnel	414
Security personnel.....	20
Athletic coaches, ticket sales, locker room aides, etc.....	152
Substitutes (<i>for all positions</i>).....	1,385
Others.....	102
Total	12,840

Figures as of October 2007



Volunteers and partners join forces to fund Lights on After School, a program to provide enrichment programs to students after school. Pictured are Mile High United Way's Art Rimando, senior director, Youth Success; Jacquie Hall, vice president, Donor Relations; Paul Franke, former Mile High board chair, Mona Sandoval, executive director, The Jefferson Foundation; and José Martinez, director for school management.

Our Volunteers

Hundreds of volunteers give their gift of time to the district supporting our classrooms, serving on committees and raising funds. In addition to individual volunteers, businesses in our community have stepped up to support their neighborhood schools. Their work adds extra value to our students' education.

The backbone of community support comes from the parents who serve on their school's PTA and school accountability committees and the Jefferson Foundation, which has supported Jeffco Public Schools in so many ways for almost 25 years. We know that the success of our students is the result of a collective effort and we thank those who have given so generously of their time during the 2007-08 school year.



Volunteer Fred Zastrow, who lost his larynx due to cancer, brings his anti-smoking message to Jeffco schools.

academic achievement

- 162 Jeffco Public Schools received School Accountability Reports (*SAR*). A total of 89 percent were rated as “excellent,” “high” or “average.”
- The Colorado Department of Education gave 25 Jeffco Public Schools “John Irwin School of Excellence” awards for ranking in the top 8 percent of state schools overall academic performance based on the 2007 School Accountability Reports.
- The district’s 2007-08 CSAP performance improved on 5 out of 8 CSAP math tests compared to the previous year.
- For the No Child Left Behind accountability measure, Adequate Yearly Progress (“*AYP*”), a total of 106 Jeffco Public Schools met 100 percent of AYP indicators.
- All Jeffco Public Schools are accredited by the district and 79 Jeffco Public Schools are recognized as “high performing” on accreditation.
- The number of students completing Advanced Placement (*AP*) classes increased to 17 percent in 2007-08 compared to 16 percent the previous year. The majority (*57 percent*) of Advanced Placement (*AP*) exams taken by Jeffco Schools’ students score a “3” or higher. The AP exams allow students an opportunity to earn credit or advanced placement at most of the nation’s colleges and universities. Scores of “3” and above often convert to college credit.
- 460 Jeffco students were enrolled in the district’s International Baccalaureate (*IB*) program at Lakewood High School during the 2007-08 school year.



academic achievement *continued*

- In 2007-08, approximately 68 Jeffco high school students, whose academic needs surpassed their school's curriculum, participated in college courses while still attending high school through the district's Post-Secondary Education Program.
- The State has introduced a new system to monitor the progress of students over time, the Colorado Academic Growth Model, which provides a way for educators to understand how much growth a student made from one CSAP administration to the next. The Growth Model compares each student's performance to students in the same grade throughout Colorado who had similar CSAP scores in past years, and calculates a student Growth Percentile. See page 32 for Jeffco Public School District figures. The Colorado Department of Education's Web site has detailed growth statistics for each school at:
<http://www.cde.state.co.us/districtprofiles.asp>.

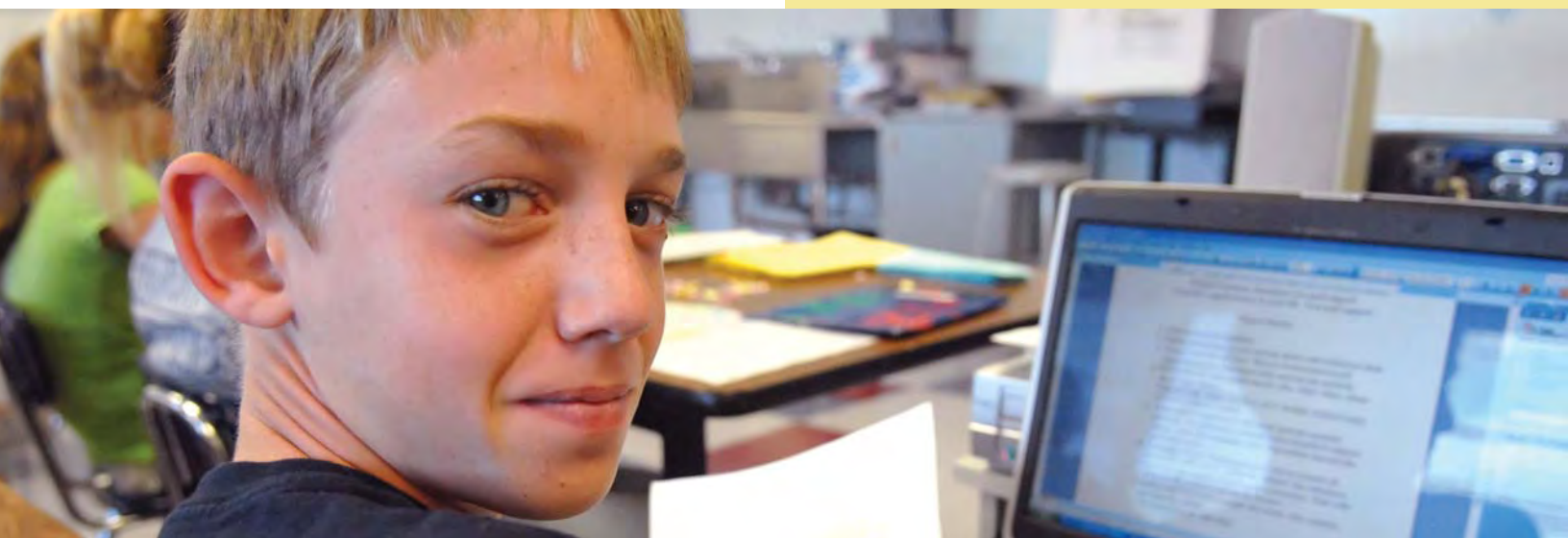
Graduation Requirements

During the 2006-07 school year, Jeffco Public Schools began a comprehensive review of graduation requirements to ensure that the district's curriculum meets the needs of the 21st century student. The Board of Education approved the following graduation requirements:

- The completion of 24 credit hours of senior high school coursework that equates to six courses per year for four years as described:

Content	Credits
English	4
Mathematics	3
Science	3
Social Sciences	3.5
World Languages	2
Electives	8.5

Schools will develop a six year Graduation Plan for each student beginning in seventh grade. The plan will be reviewed each year and will require a parent signature.



safety & security

Jeffco Public Schools is committed to making our schools and facilities safe for students and staff. We are always working proactively to create an environment that protects the well-being of our school community. We also work to be well prepared to respond to any emergencies that might occur. Jeffco Public Schools has a five-pronged approach to school safety:

Academic Excellence

At Jeffco Public Schools, we believe safety begins with a focus on academic achievement.

Prevention

Our schools have developed programs to support positive behavior and discourage bullying. Our district has a strong anti-harassment policy, and students are expected to treat each other fairly and without bias. We believe effective schools must create a climate that demonstrates caring and a sense of community.

Intervention

Counselors, campus supervisors, social workers, psychologists and teachers are trained in intervention strategies. Students are encouraged to share concerns and safety issues with school staff.

Partnerships

Partnerships are a key component to our safety plan and involve parents, community groups, law enforcement, business and social service agencies. When parents are involved in their children's education, students are more likely to experience success and less likely to engage in anti-social behaviors.

Crisis Response

Each school has developed an emergency management plan in cooperation with appropriate community partners, such as law enforcement and fire departments. Training is a critical element of the emergency management plan, and each member of the response team receives training. The district has developed a comprehensive Safety Plan which includes an accountability component. Twice each year, every school administrator completes a safety checklist.



district budget

Jeffco Public Schools' funding comes from both state and local sources. Each year, the budget created by the state legislature and the governor determines how much of the state's total budget is allocated to education. The portion allocated for K-12 education is then divided among 178 school districts throughout the state using the state's School Finance Act funding formulas. The district also receives local funding from property tax and specific ownership tax.

Community input was used to develop the 2007-08 budget, which was designed to maximize student achievement. The funding was used to create curriculum, buy textbooks and supplies, to transport students to school, to feed them and to maintain and heat buildings. The largest portion of the budget was used to pay salaries and provide medical benefits for teachers and support staff.

Separate voter-approved funding is used to build new schools and upgrade existing facilities. During the 2007-08 school year, those funds helped the district continue an extensive building program, which was approved by voters in 2004. See page 14 for details about the Capital Improvement Program.

Where the Funding Comes From

State of Colorado	\$315,220,190
Property Tax	\$266,031,028
Automobile Ownership Tax.....	\$28,858,670
Other.....	\$22,797,224
Total Revenue	\$632,907,112

State funding per pupil \$6,501.04



How the Dollars are Spent

Schools: 86%

\$504,455,383

- Staff: Teachers, Principals, Assistant Principals
- Class Size Relief
- Exceptional Student Services: English as a Second Language, Gifted/Talented, Native American, Health Services, Special Education, Supplies and Materials, Transportation, Custodial, Telecommunications, Utilities

School Support: 10%

\$56,768,235

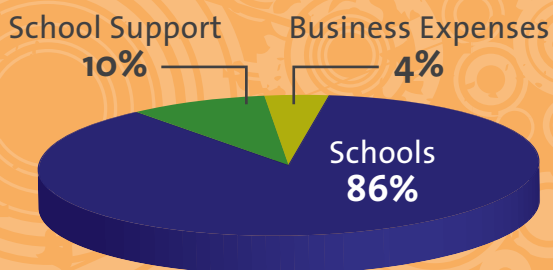
- Athletics
- Maintenance
- Community Superintendents
- Exceptional Student Services: Intervention Services, Day Treatment, Itinerant and related services
- Department for Learning and Educational Achievement: Assessment, Curriculum and Instruction, Career Development, Diversity, Library Media, Educational Technology, Staff Development

Business Expenses: 4%

\$26,680,779

- Board of Education
- Superintendent
- Districtwide Administration
- Communications
- County Treasurer Fees
- Business Services
- Human Resources

Of every \$1 the District spent...



Jeffco Public Schools once again received the Certificate of Achievement for Excellence in Financial Reporting for the Comprehensive Annual Financial Report (CAFR) from the Government Finance Officers Association (GFOA). This represents the 25th year that the district has received the award. This award is designed to recognize and encourage excellence in financial reporting by state and local governments. The district also received its second "Distinguished Budget Presentation Award" from the Government Finance Officers Association.

bond projects

In 2004, Jefferson County voters passed a school bond allowing the district to borrow approximately \$350 million for construction, renovations and additions to schools and facilities.

During 2007-08, the community saw many of these projects completed. The school year started when Bear Creek K-8 School students were welcomed to a new two-story, 120,000 square foot, 21st century facility designed to accommodate 1,080 students. The new school featured state of the art science labs, World language classrooms, art and music rooms, a multi-purpose gymnasium with wood floor, fitness room with exercise equipment, cafetorium with performance platform and a full-service kitchen. Outdoor amenities include play areas for different grade levels, a multi-use play field, long jump pit and high jump pad.

Lakewood High School students and the community also received a new school that replaced the original facility, built in 1958, which was deemed by engineers to be too costly for renovation. The new facility accommodates 1,750 students through a \$32.8 million addition and remodeling. The 28.5 acre site also includes new soccer, softball and multi-use fields, as well as reconfigured traffic and parking areas.

Wheat Ridge High School was also remodeled with updated music and athletic rooms, classrooms and an administration office.

In the southern part of the district, residents celebrated the completion of a \$26 million renovation of Chatfield High School. The upgraded 270,575 square foot school is designed to accommodate up to 2,100 students in classrooms that meet the needs of the 21st Century student. The project included a new classroom wing, an auxiliary gym, larger commons, additional science classrooms, music and vocational programs and administrative offices. Specific upgrades included expanding the existing parking lot and a new heating and ventilation system. The soccer field, tennis courts and a new athletic practice field were relocated at a site north of the school.

Fairmount Elementary students will benefit from a \$5.3 million remodel, which includes 11 new classrooms, expansion of the kitchen, relocation of the gymnasium and cafeteria, a new music room, and a rerouted bus loop. Badly needed safety upgrades were also completed.



Lakewood High School



Meiklejohn Elementary School



Bear Creek K-8 School

assessments

To help parents and the community make informed choices about education in the state and to enhance the ability of the Colorado General Assembly and the State Board of Education to monitor the progress of schools, three evaluation systems have been created: State Accreditation, School Accountability Reports (*SAR*), and Adequate Yearly Progress (*AYP*) as part of the No Child Left Behind Act.

State Accreditation

State accreditation is the Colorado Department of Education's (*CDE*) ongoing review of overall school districts and school performance. Schools must meet performance indicators for academic achievement for all students in various curriculum areas, school safety, school and community partnerships, and financial accountability. Schools receive one of the following ratings:

- Accredited;
- Accredited; Accreditation Watch;
- Accredited; Accreditation Probation;
- Non-Accredited

The district also recognizes schools as "accredited: high performing" when they exceed accreditation expectations for that particular school year. For 2007-2008, all schools in Jefferson County were accredited. A total of 79 schools were recognized as "accredited: high performing," 88 schools were "accredited," and three schools were identified as "accredited: academic watch." Accreditation information for each Jeffco Public School is listed on pages 17-21.

School Accountability Reports

The Colorado Department of Education publishes the School Accountability Report (*SAR*) to provide a rating of public schools in comparison with other schools in the state for parents and community members. The SAR includes an overall academic performance rating (*excellent, high, average, low, unsatisfactory*) and an academic improvement rating (*high, typical, low*). These ratings are calculated annually from Colorado Student Assessment Program (*CSAP*) testing and Colorado ACT data.

Other information provided in each school's SAR:

- CSAP performance
- Safety and discipline incidents
- Student/teacher ratio
- Teacher qualifications
- Budget and expenditures

The School Accountability Report issued in December 2008, for performance during the 2007-2008 school year, showed that 60 percent of our neighborhood, option and charter schools earned excellent or high ratings, 28 percent earned "average," 11 percent "low," and 14 schools received no ratings. Schools do not receive ratings if they meet one of the following criteria:

- The school does not have students within the grade level for CSAP testing.
- More than 95 percent of enrolled students had an Individual Education Program (*IEP*).

A complete list of ratings is available on pages 17-21.

assessments *continued*

Adequate Yearly Progress

The most recent accountability system for all Colorado schools, Adequate Yearly Progress, (*AYP*) is what the federal No Child Left Behind Act (*NCLB*) uses to measure the achievement of individual schools, school districts and state education programs.

The NCLB requires that every school or district that receives funds under NCLB Title I meets specific academic goals in reading and math each year as measured by the Colorado Student Assessment Program (*CSAP*). School and district performance toward meeting those goals is called Adequate Yearly Progress. The Colorado Department of Education annually reviews the performance of each school district that receives funds under NCLB Title I (*federal funds for low income students*). To make AYP, districts must meet targets for participation and performance in reading and math assessments for all applicable subgroups of children in the district (*race/ethnicity, economically disadvantaged, students with disabilities, and students with limited English proficiency*). Based on assessment results, a district is identified for Title I Program Improvement if it did not make AYP in the same content area (*reading or math*) for two consecutive years.

Jeffco Public Schools had 153 AYP targets for 2007-08 and met 136 of them, or 89 percent. Since AYP is an “all or nothing” system, and the district did not meet 100 percent of its targets, Jeffco Public Schools was placed on an improvement program according to federal guidelines. A complete list of Jeffco Public Schools AYP determinations is available on pages 17-21 of this report. The Colorado Department of Education Web site has details about the district AYP rating as well as information about each school’s progress at: <http://www.cde.state.co.us/districtprofiles.asp>.



school accountability ratings

Elementary Schools

Elementary Schools	Accredited	SAR Rating	Met AYP Indicators
Adams Elementary	Accredited: High Performing	high	100%
Allendale Elementary	Accredited: High Performing	average	100%
Bear Creek Elementary	Accredited: High Performing	high	100%
Belmar Elementary	Accredited	average	100%
Bergen Meadow Primary	Accredited: High Performing	No test administered in K-2	
Bergen Valley Intermediate	Accredited: High Performing	excellent	100%
Blue Heron Elementary	Accredited: High Performing	high	100%
Bradford Elementary	Accredited: High Performing	excellent	100%
Bradford Intermediate	Accredited: High Performing	excellent	100%
Campbell Elementary	Accredited: High Performing	average	100%
Coal Creek Canyon Elementary	Accredited	high	100%
Collegiate Academy Charter Elementary School	Accredited	high	100%
Colorow Elementary	Accredited: High Performing	average	100%
Columbine Hills Elementary	Accredited: High Performing	high	100%
Compass Montessori Golden Elementary	Accredited	average	100%
Compass Montessori Wheat Ridge Elementary	Accredited	average	100%
Coronado Elementary	Accredited: High Performing	high	100%
Deane Elementary	Accredited	average	100%
Dennison Elementary	Accredited: High Performing	excellent	100%
Devinny Elementary	Accredited: High Performing	excellent	100%
Dutch Creek Elementary	Accredited: High Performing	average	100%
Edgewater Elementary	Accredited	low	85%
Eiber Elementary	Accredited	low	78%
Elk Creek Elementary	Accredited	high	100%
Excel Academy Elementary	Accredited: High Performing	average	100%
Fairmount Elementary	Accredited	high	100%
Fitzmorris Elementary	Accredited	average	100%
Foothills Elementary	Accredited	average	100%
Foster Elementary	Accredited: High Performing	average	100%
Free Horizon Montessori	Accredited	high	100%
Fremont Elementary	Accredited	average	100%
Glennon Heights Elementary	Accredited	average	100%
Governor's Ranch Elementary	Accredited	high	100%
Green Gables Elementary	Accredited: High Performing	high	100%
Green Mountain Elementary	Accredited: High Performing	average	100%
Hackberry Hill Elementary	Accredited: High Performing	high	100%
Hutchinson Elementary	Accredited: High Performing	high	100%
Jeffco Open Elementary School	Accredited	low	89%
Jefferson Academy Elementary	Accredited: High Performing	high	100%
Kendallvue Elementary	Accredited	high	93%
Kendrick Lakes Elementary	Accredited: High Performing	high	100%
Kullerstrand Elementary	Accredited	average	88%
Kyffin Elementary	Accredited: High Performing	excellent	100%
Lasley Elementary	Accredited: High Performing	average	100%
Lawrence Elementary	Accredited	average	100%

Title 1 schools on school improvement (that have not met AYP determination for two consecutive years) are indicated in bold.

school accountability ratings

Elementary Schools continued

Elementary Schools	Accredited	SAR Rating	Met AYP Indicators
Leawood Elementary	Accredited	high	100%
Lincoln Academy Elementary	Accredited	high	100%
Little Elementary	Accredited	average	100%
Lukas Elementary	Accredited	high	96%
Lumberg Elementary	Accredited	low	84%
Maple Grove Elementary	Accredited: High Performing	high	100%
Marshdale Elementary	Accredited: High Performing	excellent	100%
Martensen Elementary	Accredited	low	96%
Meiklejohn Elementary	Accredited	high	100%
Miller Special Elementary	Accredited	Alt Ed Campus	50%
Mitchell Elementary	Accredited	high	100%
Molholm Elementary	Accredited	average	97%
Montessori Peaks Academy	Accredited	high	100%
Mortensen Elementary	Accredited	high	100%
Mount Carbon Elementary	Accredited: High Performing	high	100%
Mountain Phoenix Community Elementary	Accredited	average	100%
Normandy Elementary	Accredited: High Performing	excellent	100%
Parmalee Elementary	Accredited: High Performing	excellent	100%
Parr Elementary	Accredited: Academic Watch	average	95%
Patterson International	Accredited: High Performing	average	97%
Peck Elementary	Accredited: High Performing	high	100%
Peiffer Elementary	Accredited	average	88%
Pennington Elementary	Accredited	low	83%
Pleasant View Elementary	Accredited	low	80%
Powderhorn Elementary	Accredited: High Performing	high	100%
Prospect Valley Elementary	Accredited: High Performing	high	100%
Ralston Elementary	Accredited: High Performing	excellent	100%
Red Rocks Elementary	Accredited: High Performing	excellent	100%
Rocky Mountain Academy Elementary	Accredited: High Performing	excellent	100%
Rocky Mountain Deaf Elementary School	Accredited	Alt Ed Campus	67%
Rooney Ranch Elementary	Accredited	high	100%
Russell Elementary	Accredited: High Performing	average	100%
Ryan Elementary	Accredited: High Performing	high	100%
Secrest Elementary	Accredited	low	100%
Semper Elementary	Accredited	average	91%
Shaffer Elementary	Accredited: High Performing	excellent	100%
Shelton Elementary	Accredited	average	100%
Sheridan Green Elementary	Accredited	high	100%
Sierra Elementary	Accredited: High Performing	high	100%
Slater Elementary	Accredited: Academic Watch	low	88%
Sobesky Academy Elementary School	No Rating	Alt Ed Campus	67%
South Lakewood Elementary	Accredited: Academic Watch	average	96%
Stein Elementary	Accredited: High Performing	average	97%
Stevens Elementary	Accredited	average	93%
Stober Elementary	Accredited: High Performing	high	100%

Elementary Schools continued

Elementary Schools	Accredited	SAR Rating	Met AYP Indicators
Stony Creek Elementary	Accredited: High Performing	high	96%
Stott Elementary	Accredited: High Performing	average	100%
Swanson Elementary	Accredited: High Performing	low	100%
Thomson Elementary	Accredited	average	100%
Ute Meadows Elementary	Accredited: High Performing	high	100%
Van Arsdale Elementary	Accredited: High Performing	high	100%
Vanderhoof Elementary	Accredited	high	100%
Vivian Elementary	Accredited	low	100%
Warder Elementary	Accredited: High Performing	average	100%
Weber Elementary	Accredited	average	97%
Welchester Elementary	Accredited: High Performing	average	100%
West Jefferson Elementary	Accredited: High Performing	high	100%
West Woods Elementary	Accredited: High Performing	excellent	100%
Westgate Elementary	Accredited: High Performing	average	100%
Westridge Elementary	Accredited: High Performing	high	100%
Wilmore-Davis Elementary	Accredited: High Performing	average	100%
Wilmot Elementary	Accredited: High Performing	excellent	100%
Witt Elementary	Accredited: High Performing	average	100%
Woodrow Wilson Academy Elementary	Accredited: High Performing	high	100%
Zerger Elementary	Accredited	average	100%

*Title 1 schools on school improvement (that have not met AYP determination for two consecutive years) are indicated in **bold**.*



school accountability ratings

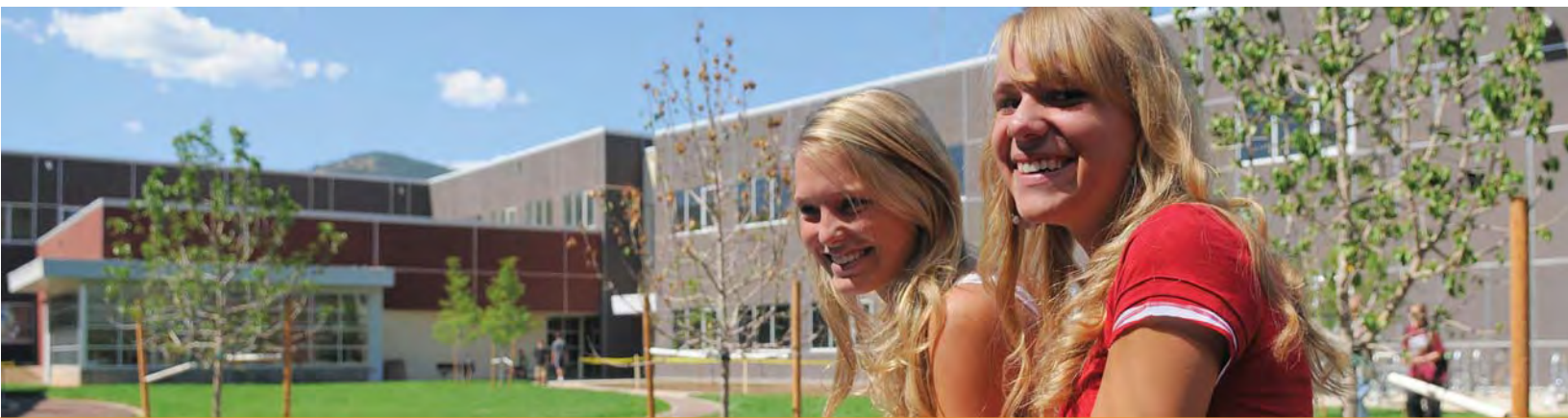
Middle Schools

Middle Schools	Accredited	SAR Rating	Met AYP Indicators
Arvada Middle School	Accredited	low	68%
Bear Creek Middle	Accredited: High Performing	excellent	100%
Bell Middle School	Accredited: High Performing	high	97%
Carmody Middle School	Accredited	high	92%
Coal Creek Canyon Middle	Accredited: High Performing	excellent	100%
Collegiate Academy Charter Middle School	Accredited: High Performing	high	100%
Compass Montessori Golden Secondary	Accredited	average	100%
Creighton Middle School	Accredited	average	83%
Deer Creek Middle School	Accredited	excellent	100%
D'Evelyn Middle	Accredited: High Performing	excellent	100%
Drake Middle School	Accredited	high	90%
Dunstan Middle School	Accredited	high	97%
Evergreen Middle School	Accredited: High Performing	excellent	100%
Everitt Middle School	Accredited	average	86%
Excel Academy Middle	Accredited	average	100%
Falcon Bluffs Middle School	Accredited	high	97%
Jeffco Open Middle School	Accredited	low	83%
Jefferson Academy Secondary	Accredited	high	100%
Johnson Program Middle School	No Rating	Alt Ed Campus	75%
Ken Caryl Middle School	Accredited: High Performing	excellent	97%
Lincoln Academy Middle School	Accredited	high	100%
Mandalay Middle School	Accredited	high	98%
Manning Options School	Accredited: High Performing	excellent	100%
Miller Special Middle School	Accredited	Alt Ed Campus	50%
Montessori Peaks Academy Middle	Accredited	high	100%
Moore Middle School	Accredited	average	91%
Mountain Phoenix Community Middle School	Accredited	no rating	100%
North Arvada Middle School	Accredited	average	78%
Oberon Middle School	Accredited	high	93%
O'Connell Middle School	Accredited	low	89%
Rocky Mountain Academy Middle School	Accredited: High Performing	excellent	100%
Rocky Mountain Deaf Middle School	Accredited	Alt Ed Campus	67%
Sobesky Academy Middle School	No Rating	Alt Ed Campus	75%
Summit Ridge Middle School	Accredited	high	92%
Wayne Carle Middle School	Accredited	high	93%
West Jefferson Middle School	Accredited	excellent	100%
Wheat Ridge Middle School	Accredited	low	72%
Woodrow Wilson Academy Middle	Accredited: High Performing	high	100%

*Title 1 schools on school improvement (that have not met AYP determination for two consecutive years) are indicated in **bold**.*

High Schools

High Schools	Accredited	SAR Rating	Met AYP Indicators
Alameda High School	Accredited	low	75%
Arvada High School	Accredited: High Performing	average	81%
Arvada West High School	Accredited: High Performing	high	97%
Bear Creek High School	Accredited	high	97%
Brady Exploration High School	Accredited	no rating	82%
Chatfield High School	Accredited: High Performing	excellent	92%
Collegiate Academy Charter High School	Accredited: High Performing	high	100%
Columbine High School	Accredited: High Performing	high	96%
Compass Montessori Golden High School	Accredited: High Performing	high	100%
Conifer High School	Accredited: High Performing	excellent	100%
Dakota Ridge High School	Accredited: High Performing	high	96%
D'Evelyn Secondary	Accredited: High Performing	excellent	100%
Evergreen High School	Accredited	excellent	94%
Golden High School	Accredited	high	88%
Green Mountain High School	Accredited	high	96%
Jeffco Open High School	Accredited	low	92%
Jefferson Academy High School	Accredited	excellent	100%
Jefferson High School	Accredited	low	73%
Lakewood High School	Accredited	excellent	97%
Long View High School	No Rating	Alt Ed Campus	67%
McLain High School	No Rating	Alt Ed Campus	55%
Miller Special High School	Accredited	Alt Ed Campus	60%
New America High School	Accredited	no rating	78%
Pomona High School	Accredited: High Performing	high	93%
Ralston Valley High School	Accredited	excellent	91%
Sobesky Academy High School	No Rating	Alt Ed Campus	50%
Standley Lake High School	Accredited	high	97%
Wheat Ridge High School	Accredited: High Performing	high	96%



test scores & performance ratings

Colorado Student Assessment Program (CSAP)

CSAP is the Colorado Student Assessment Program given to Colorado public school students in grades three through 10. Depending on the grade, the CSAP tests students' skills in reading, writing, mathematics and science. CSAP includes multiple choice and short and long essay questions. For example, on math tests, students must not only be able to solve a problem, but also be able to explain how they arrived at the answer. The CSAP is based on state content standards and measures student progress toward the standards. Students are not compared to each other, but are rated on how well they are meeting standards. The rating scale is advanced, proficient, partially proficient and unsatisfactory.

There is a very small group of students with an Individual Education Program (*IEP*) who are not able to take the general CSAP because of the nature and intensity of their disability. These students need a different way to show what they know and can do. The Colorado Student Assessment Program-Alternate (*CSAPA*) was developed to measure progress for students who are beginning to demonstrate foundational skills of content standards. For CSAPA results see the Colorado Department of Education Web site at: <http://www.cde.state.co.us/districtprofiles.asp>.

Grade 3 Reading	Group	Year	Unsatisfactory	Partially Proficient	Proficient	Advanced	No Scores
	Female	2007-2008	5.3%	13.6%	72.1%	8.9%	0.1%
	Male		9.2%	16.8%	66.1%	7.5%	0.3%
	American Indian		11.0%	19.5%	63.4%	4.9%	1.2%
	Asian		6.4%	13.6%	73.3%	6.4%	0.4%
	Black		13.7%	25.9%	55.4%	5.0%	0.0%
	Hispanic		12.8%	25.7%	57.5%	3.9%	0.2%
	White		5.7%	12.3%	72.3%	9.5%	0.2%
	Non English Proficient		44.4%	32.5%	21.4%	0.0%	1.6%
	Limited English Proficient		13.5%	40.9%	45.1%	0.0%	0.5%
	Special Education		34.4%	28.4%	33.7%	2.0%	1.4%
	Gifted/Talented		0.0%	0.3%	65.7%	34.0%	0.0%
	Economically Disadvantaged		15.1%	26.2%	56.6%	1.6%	0.4%
	All Jeffco Students	2007-2008	7.3%	15.3%	69.0%	8.2%	0.2%
		2006-2007	6.9%	15.8%	68.1%	9.0%	0.3%
All Colorado Students	2007-2008	11.0%	18.0%	64.0%	7.0%	0.0%	
	2006-2007	10.0%	19.0%	64.0%	7.0%	0.0%	

Grade 4 Reading	Group	Year	Unsatisfactory	Partially Proficient	Proficient	Advanced	No Scores
	Female	2007-2008	5.8%	17.8%	69.3%	6.9%	0.2%
	Male		7.2%	23.7%	64.2%	4.6%	0.3%
	American Indian		6.7%	34.7%	56.0%	1.3%	1.3%
	Asian		4.5%	16.5%	71.2%	7.4%	0.4%
	Black		13.5%	24.1%	56.4%	4.5%	1.5%
	Hispanic		12.9%	33.4%	51.7%	1.9%	0.2%
	White		4.6%	17.2%	71.2%	6.8%	0.2%
	Non English Proficient		51.9%	35.7%	11.6%	0.0%	0.8%
	Limited English Proficient		11.9%	56.8%	30.8%	0.0%	0.4%
	Special Education		32.5%	36.8%	29.7%	0.3%	0.6%
	Gifted/Talented		0.0%	1.7%	69.8%	28.5%	0.0%
	Economically Disadvantaged		13.7%	35.1%	49.3%	1.6%	0.3%
	All Jeffco Students	2007-2008	6.5%	20.8%	66.7%	5.7%	0.3%
		2006-2007	8.8%	19.3%	62.2%	9.4%	0.3%
All Colorado Students	2007-2008	10.0%	24.0%	62.0%	4.0%	0.0%	
	2006-2007	13.0%	22.0%	58.0%	6.0%	0.0%	

Grade 5 Reading	Group	Year	Unsatisfactory	Partially Proficient	Proficient	Advanced	No Scores
	Female	2007-2008	6.2%	13.1%	66.3%	14.0%	0.4%
	Male		9.6%	16.5%	64.4%	9.2%	0.4%
	American Indian		16.0%	13.3%	60.0%	10.7%	0.0%
	Asian		6.3%	13.0%	67.7%	12.6%	0.4%
	Black		12.9%	25.0%	55.2%	4.3%	2.6%
	Hispanic		17.3%	24.0%	54.3%	4.1%	0.3%
	White		5.4%	12.3%	68.5%	13.6%	0.3%
	Non English Proficient		66.7%	18.6%	10.8%	0.0%	3.9%
	Limited English Proficient		24.3%	42.8%	32.9%	0.0%	0.0%
	Special Education		37.5%	30.7%	29.8%	0.9%	1.1%
	Gifted/Talented		0.0%	0.7%	56.8%	42.4%	0.0%
	Economically Disadvantaged		18.4%	25.0%	52.9%	3.2%	0.5%
	All Jeffco Students	2007-2008	8.0%	14.8%	65.3%	11.5%	0.4%
	2006-2007	9.8%	16.7%	63.7%	9.5%	0.3%	
All Colorado Students	2007-2008	11.0%	18.0%	61.0%	9.0%	0.0%	
	2006-2007	13.0%	18.0%	59.0%	9.0%	0.0%	

Grade 6 Reading	Group	Year	Unsatisfactory	Partially Proficient	Proficient	Advanced	No Scores
	Female	2007-2008	3.2%	12.1%	66.2%	18.2%	0.3%
	Male		6.2%	16.9%	64.8%	11.9%	0.2%
	American Indian		10.1%	21.7%	62.3%	4.3%	1.4%
	Asian		3.9%	15.1%	56.5%	23.7%	0.9%
	Black		4.7%	23.6%	62.8%	8.8%	0.0%
	Hispanic		10.7%	25.0%	58.5%	5.7%	0.2%
	White		3.2%	11.5%	67.9%	17.2%	0.2%
	Non English Proficient		66.2%	14.9%	16.2%	0.0%	2.7%
	Limited English Proficient		18.7%	48.7%	31.7%	0.9%	0.0%
	Special Education		26.2%	38.8%	33.0%	1.1%	0.9%
	Gifted/Talented		0.0%	0.4%	45.7%	53.9%	0.0%
	Economically Disadvantaged		11.7%	25.0%	58.2%	4.9%	0.2%
	All Jeffco Students	2007-2008	4.7%	14.5%	65.5%	14.9%	0.3%
	2006-2007	5.5%	14.9%	64.4%	14.8%	0.4%	
All Colorado Students	2007-2008	9.0%	19.0%	59.0%	12.0%	1.0%	
	2006-2007	10.0%	19.0%	59.0%	12.0%	1.0%	

Grade 7 Reading	Group	Year	Unsatisfactory	Partially Proficient	Proficient	Advanced	No Scores
	Female	2007-2008	5.6%	16.4%	63.4%	14.0%	0.5%
	Male		11.1%	22.7%	58.2%	7.1%	0.8%
	American Indian		19.7%	13.6%	59.1%	7.6%	0.0%
	Asian		8.2%	17.9%	57.1%	15.3%	1.5%
	Black		14.0%	28.1%	54.4%	3.5%	0.0%
	Hispanic		18.4%	33.0%	44.9%	2.8%	0.9%
	White		5.9%	16.5%	64.8%	12.2%	0.6%
	Non English Proficient		59.2%	28.2%	9.9%	0.0%	2.8%
	Limited English Proficient		36.1%	50.2%	13.2%	0.5%	0.0%
	Special Education		41.3%	32.1%	22.7%	1.4%	2.5%
	Gifted/Talented		0.2%	1.4%	56.3%	41.3%	0.7%
	Economically Disadvantaged		18.7%	31.4%	46.6%	2.3%	0.9%
	All Jeffco Students	2007-2008	8.5%	19.6%	60.7%	10.5%	0.7%
	2006-2007	9.1%	18.2%	61.9%	10.3%	0.6%	
All Colorado Students	2007-2008	12.0%	22.0%	56.0%	9.0%	1.0%	
	2006-2007	13.0%	21.0%	57.0%	9.0%	1.0%	

test scores & performance ratings continued

CSAP scores continued

Grade 8 Reading	Group	Year	Unsatisfactory	Partially Proficient	Proficient	Advanced	No Scores
	Female	2007-2008	4.9%	14.4%	64.1%	15.8%	0.8%
	Male		8.3%	20.8%	60.7%	9.0%	1.2%
	American Indian		10.6%	18.3%	57.7%	11.5%	1.9%
	Asian		9.3%	11.0%	62.6%	15.9%	1.3%
	Black		13.0%	31.2%	52.9%	1.4%	1.4%
	Hispanic		13.3%	31.7%	49.9%	4.2%	0.9%
	White		4.7%	14.4%	65.6%	14.3%	1.0%
	Non English Proficient		78.3%	21.7%	0.0%	0.0%	0.0%
	Limited English Proficient		27.4%	51.8%	19.8%	0.5%	0.5%
	Special Education		35.2%	35.4%	25.9%	0.7%	2.8%
	Gifted/Talented		0.0%	1.3%	51.1%	46.8%	0.8%
	Economically Disadvantaged		16.0%	30.7%	49.9%	2.5%	1.0%
	All Jeffco Students	2007-2008	6.6%	17.6%	62.4%	12.4%	1.0%
		2006-2007	8.4%	20.7%	60.3%	9.8%	0.8%
All Colorado Students	2007-2008	11.0%	21.0%	57.0%	10.0%	1.0%	
	2006-2007	12.0%	24.0%	55.0%	8.0%	1.0%	

Grade 9 Reading	Group	Year	Unsatisfactory	Partially Proficient	Proficient	Advanced	No Scores
	Female	2007-2008	3.5%	16.5%	68.4%	9.9%	1.7%
	Male		8.3%	21.3%	63.4%	5.3%	1.8%
	American Indian		14.3%	21.4%	57.1%	0.0%	7.1%
	Asian		5.4%	15.8%	68.8%	6.9%	3.0%
	Black		15.3%	32.2%	48.3%	1.7%	2.5%
	Hispanic		12.4%	32.0%	49.4%	3.2%	3.0%
	White		4.0%	15.4%	70.4%	8.9%	1.3%
	Non English Proficient		50.5%	34.2%	4.5%	0.0%	10.8%
	Limited English Proficient		21.3%	59.6%	16.3%	0.0%	2.8%
	Special Education		29.7%	41.7%	24.7%	0.5%	3.4%
	Gifted/Talented		0.1%	2.0%	64.4%	33.0%	0.5%
	Economically Disadvantaged		13.2%	32.8%	48.6%	2.3%	3.2%
	All Jeffco Students	2007-2008	5.9%	18.9%	65.8%	7.6%	1.8%
		2006-2007	6.2%	19.2%	68.1%	4.7%	1.8%
All Colorado Students	2007-2008	9.0%	23.0%	60.0%	6.0%	2.0%	
	2006-2007	8.0%	24.0%	62.0%	4.0%	2.0%	

Grade 10 Reading	Group	Year	Unsatisfactory	Partially Proficient	Proficient	Advanced	No Scores
	Female	2007-2008	4.4%	13.9%	61.7%	17.5%	2.5%
	Male		10.7%	22.0%	56.1%	8.7%	2.5%
	American Indian		8.0%	24.0%	62.7%	4.0%	1.3%
	Asian		5.7%	15.2%	58.7%	17.4%	3.0%
	Black		10.7%	29.8%	48.1%	8.4%	3.1%
	Hispanic		14.4%	29.5%	48.1%	3.8%	4.1%
	White		6.0%	15.1%	61.6%	15.3%	2.0%
	Non English Proficient		50.6%	30.1%	2.4%	0.0%	16.9%
	Limited English Proficient		23.7%	48.1%	21.8%	0.0%	6.4%
	Special Education		37.2%	34.2%	21.7%	1.0%	6.0%
	Gifted/Talented		0.7%	2.0%	50.4%	46.6%	0.2%
	Economically Disadvantaged		17.2%	28.7%	45.0%	4.2%	5.0%
	All Jeffco Students	2007-2008	7.6%	18.0%	58.9%	13.0%	2.5%
		2006-2007	6.4%	17.3%	63.7%	10.3%	2.2%
All Colorado Students	2007-2008	10.0%	21.0%	55.0%	11.0%	3.0%	
	2006-2007	8.0%	19.0%	60.0%	9.0%	3.0%	

Grade 3 Writing	Group	Year	Unsatisfactory	Partially Proficient	Proficient	Advanced	No Scores
	Female	2007-2008	2.6%	32.3%	47.4%	17.6%	0.1%
	Male		6.0%	40.6%	41.9%	11.3%	0.3%
	American Indian		4.9%	46.3%	37.8%	11.0%	0.0%
	Asian		6.4%	28.8%	46.2%	18.2%	0.4%
	Black		4.3%	54.3%	35.5%	5.1%	0.7%
	Hispanic		8.0%	51.4%	33.9%	6.6%	0.2%
	White		3.3%	32.4%	47.6%	16.5%	0.2%
	Non English Proficient		29.9%	60.6%	7.1%	0.8%	1.6%
	Limited English Proficient		8.3%	69.6%	20.7%	1.4%	0.0%
	Special Education		21.2%	59.2%	16.9%	2.2%	0.5%
	Gifted/Talented		0.0%	4.0%	46.0%	50.0%	0.0%
	Economically Disadvantaged		9.8%	52.6%	32.8%	4.6%	0.3%
	All Jeffco Students	2007-2008	4.4%	36.5%	44.5%	14.4%	0.2%
		2006-2007	2.8%	34.0%	50.7%	12.2%	0.2%
All Colorado Students	2007-2008	7.0%	43.0%	40.0%	10.0%	0.0%	
	2006-2007	6.0%	40.0%	46.0%	9.0%	0.0%	

Grade 4 Writing	Group	Year	Unsatisfactory	Partially Proficient	Proficient	Advanced	No Scores
	Female	2007-2008	3.1%	29.7%	48.3%	18.7%	0.3%
	Male		4.6%	42.0%	45.4%	7.6%	0.4%
	American Indian		4.0%	57.3%	30.7%	8.0%	0.0%
	Asian		2.1%	29.6%	46.5%	21.4%	0.4%
	Black		7.5%	44.0%	36.6%	9.0%	3.0%
	Hispanic		8.4%	51.9%	35.0%	4.6%	0.2%
	White		2.6%	31.2%	50.8%	15.2%	0.3%
	Non English Proficient		34.9%	57.4%	7.0%	0.0%	0.8%
	Limited English Proficient		8.8%	74.9%	15.0%	0.9%	0.4%
	Special Education		16.8%	63.4%	18.1%	1.1%	0.6%
	Gifted/Talented		0.0%	4.7%	51.7%	43.5%	0.0%
	Economically Disadvantaged		8.2%	56.1%	31.3%	3.7%	0.7%
	All Jeffco Students	2007-2008	3.8%	35.9%	46.8%	13.0%	0.4%
		2006-2007	4.9%	37.4%	46.6%	10.7%	0.4%
All Colorado Students	2007-2008	7.0%	41.0%	43.0%	9.0%	0.0%	
	2006-2007	8.0%	42.0%	41.0%	8.0%	0.0%	

Grade 5 Writing	Group	Year	Unsatisfactory	Partially Proficient	Proficient	Advanced	No Scores
	Female	2007-2008	2.6%	26.0%	51.2%	19.8%	0.4%
	Male		4.6%	35.2%	48.1%	11.9%	0.3%
	American Indian		9.3%	33.3%	46.7%	10.7%	0.0%
	Asian		3.5%	24.4%	48.4%	22.8%	0.8%
	Black		6.9%	50.0%	37.9%	4.3%	0.9%
	Hispanic		7.6%	50.1%	35.7%	6.2%	0.4%
	White		2.4%	25.5%	53.7%	18.2%	0.3%
	Non English Proficient		38.2%	52.9%	3.9%	0.0%	4.9%
	Limited English Proficient		8.1%	77.0%	14.9%	0.0%	0.0%
	Special Education		15.4%	61.8%	20.1%	1.5%	1.2%
	Gifted/Talented		0.0%	2.6%	45.7%	51.7%	0.0%
	Economically Disadvantaged		8.7%	51.7%	34.9%	4.3%	0.4%
	All Jeffco Students	2007-2008	3.6%	30.7%	49.6%	15.7%	0.3%
		2006-2007	3.6%	34.1%	50.0%	12.0%	0.2%
All Colorado Students	2007-2008	6.0%	35.0%	47.0%	12.0%	0.0%	
	2006-2007	5.0%	37.0%	47.0%	10.0%	0.0%	

test scores & performance ratings continued

CSAP scores continued

Grade 6 Writing	Group	Year	Unsatisfactory	Partially Proficient	Proficient	Advanced	No Scores
	Female	2007-2008	1.6%	24.3%	55.8%	18.1%	0.2%
	Male		3.3%	34.3%	52.3%	9.9%	0.3%
	American Indian		5.8%	39.1%	46.4%	7.2%	1.4%
	Asian		1.7%	27.2%	48.3%	22.0%	0.9%
	Black		3.4%	44.6%	44.6%	7.4%	0.0%
	Hispanic		5.5%	46.6%	42.6%	5.0%	0.4%
	White		1.6%	24.6%	57.7%	16.0%	0.2%
	Non English Proficient		39.2%	50.0%	5.4%	0.0%	5.4%
	Limited English Proficient		7.8%	73.0%	18.3%	0.9%	0.0%
	Special Education		13.1%	64.5%	21.1%	0.6%	0.6%
	Gifted/Talented		0.0%	2.4%	51.2%	46.4%	0.0%
	Economically Disadvantaged		6.4%	47.2%	41.6%	4.5%	0.3%
	All Jeffco Students	2007-2008	2.4%	29.4%	54.0%	13.9%	0.2%
		2006-2007	2.7%	29.1%	53.4%	14.5%	0.4%
All Colorado Students	2007-2008	5.0%	35.0%	49.0%	10.0%	0.0%	
	2006-2007	5.0%	35.0%	49.0%	11.0%	1.0%	

Grade 7 Writing	Group	Year	Unsatisfactory	Partially Proficient	Proficient	Advanced	No Scores
	Female	2007-2008	1.8%	24.2%	52.9%	20.6%	0.5%
	Male		5.5%	37.9%	46.7%	9.5%	0.5%
	American Indian		7.6%	30.3%	50.0%	10.6%	1.5%
	Asian		4.5%	22.4%	49.6%	22.4%	1.1%
	Black		7.0%	45.6%	39.5%	7.9%	0.0%
	Hispanic		7.7%	52.0%	34.5%	5.2%	0.6%
	White		2.6%	26.7%	53.4%	16.9%	0.4%
	Non English Proficient		42.3%	52.1%	4.2%	0.0%	1.4%
	Limited English Proficient		13.2%	78.5%	8.3%	0.0%	0.0%
	Special Education		19.0%	59.5%	18.4%	1.4%	1.6%
	Gifted/Talented		0.0%	3.3%	46.6%	49.8%	0.3%
	Economically Disadvantaged		8.9%	51.7%	34.8%	3.8%	0.6%
	All Jeffco Students	2007-2008	3.7%	31.3%	49.7%	14.9%	0.5%
		2006-2007	1.9%	29.2%	50.2%	18.1%	0.6%
All Colorado Students	2007-2008	5.0%	37.0%	46.0%	12.0%	1.0%	
	2006-2007	3.0%	36.0%	46.0%	15.0%	1.0%	

Grade 8 Writing	Group	Year	Unsatisfactory	Partially Proficient	Proficient	Advanced	No Scores
	Female	2007-2008	1.8%	29.1%	50.7%	17.6%	0.8%
	Male		5.8%	45.2%	40.9%	7.1%	1.0%
	American Indian		5.8%	49.0%	35.6%	8.7%	1.0%
	Asian		2.6%	30.4%	44.1%	21.6%	1.3%
	Black		5.8%	60.9%	29.0%	2.9%	1.4%
	Hispanic		7.3%	56.8%	31.5%	3.4%	0.9%
	White		3.0%	32.3%	49.6%	14.2%	0.8%
	Non English Proficient		50.0%	50.0%	0.0%	0.0%	0.0%
	Limited English Proficient		8.6%	80.7%	8.1%	2.0%	0.5%
	Special Education		21.9%	64.6%	10.7%	0.2%	2.7%
	Gifted/Talented		0.0%	4.7%	51.3%	43.2%	0.8%
	Economically Disadvantaged		8.8%	57.7%	30.7%	1.9%	0.9%
	All Jeffco Students	2007-2008	3.9%	37.2%	45.7%	12.3%	0.9%
		2006-2007	2.6%	37.5%	47.8%	11.2%	0.9%
All Colorado Students	2007-2008	5.0%	41.0%	42.0%	10.0%	1.0%	
	2006-2007	4.0%	44.0%	42.0%	9.0%	1.0%	

Grade 9 Writing	Group	Year	Unsatisfactory	Partially Proficient	Proficient	Advanced	No Scores
	Female	2007-2008	2.1%	31.6%	51.9%	12.8%	1.6%
	Male		6.3%	43.2%	42.9%	5.7%	1.8%
	American Indian		9.5%	42.9%	38.1%	2.4%	7.1%
	Asian		5.4%	27.2%	54.5%	10.9%	2.0%
	Black		12.7%	50.8%	31.4%	3.4%	1.7%
	Hispanic		8.7%	55.9%	28.8%	3.5%	3.1%
	White		2.8%	32.9%	52.2%	10.8%	1.3%
	Non English Proficient		43.2%	44.1%	1.8%	0.0%	10.8%
	Limited English Proficient		10.7%	79.8%	6.2%	0.6%	2.8%
	Special Education		23.1%	62.4%	10.6%	0.5%	3.4%
	Gifted/Talented		0.2%	6.6%	56.0%	36.7%	0.5%
	Economically Disadvantaged		8.7%	57.4%	28.8%	2.0%	3.1%
	All Jeffco Students	2007-2008	4.3%	37.6%	47.3%	9.2%	1.7%
		2006-2007	3.6%	37.9%	47.8%	8.8%	1.9%
All Colorado Students	2007-2008	5.0%	43.0%	42.0%	7.0%	2.0%	
	2006-2007	5.0%	44.0%	42.0%	7.0%	2.0%	

Grade 10 Writing	Group	Year	Unsatisfactory	Partially Proficient	Proficient	Advanced	No Scores
	Female	2007-2008	3.9%	30.4%	49.3%	13.9%	2.5%
	Male		12.1%	38.7%	39.7%	6.9%	2.6%
	American Indian		10.7%	40.0%	46.7%	1.3%	1.3%
	Asian		6.1%	34.3%	44.8%	11.7%	3.0%
	Black		12.2%	45.8%	34.4%	4.6%	3.1%
	Hispanic		15.0%	49.7%	28.1%	3.0%	4.2%
	White		6.4%	30.8%	48.4%	12.3%	2.1%
	Non English Proficient		47.0%	33.7%	1.2%	0.0%	18.1%
	Limited English Proficient		23.1%	65.4%	5.8%	0.0%	5.8%
	Special Education		38.3%	46.6%	7.6%	0.6%	7.0%
	Gifted/Talented		1.2%	5.3%	52.9%	40.4%	0.2%
	Economically Disadvantaged		17.4%	47.5%	26.9%	3.2%	4.9%
	All Jeffco Students	2007-2008	8.1%	34.6%	44.4%	10.3%	2.5%
		2006-2007	5.4%	34.9%	47.7%	9.6%	2.4%
All Colorado Students	2007-2008	10.0%	40.0%	39.0%	8.0%	3.0%	
	2006-2007	7.0%	39.0%	43.0%	8.0%	3.0%	

Grade 3 Math	Group	Year	Unsatisfactory	Partially Proficient	Proficient	Advanced	No Scores
	Female	2007-2008	5.5%	21.0%	42.6%	30.8%	0.1%
	Male		5.6%	20.4%	39.3%	34.5%	0.2%
	American Indian		7.3%	30.5%	46.3%	15.9%	0.0%
	Asian		4.7%	16.6%	34.5%	43.8%	0.4%
	Black		14.5%	31.2%	39.9%	13.8%	0.7%
	Hispanic		10.6%	34.0%	38.8%	16.5%	0.1%
	White		4.0%	16.7%	41.7%	37.5%	0.1%
	Non English Proficient		23.1%	49.1%	20.8%	5.8%	1.2%
	Limited English Proficient		6.9%	41.9%	44.0%	7.3%	0.0%
	Special Education		23.8%	34.8%	29.9%	10.9%	0.7%
	Gifted/Talented		0.0%	0.7%	16.5%	82.8%	0.0%
	Economically Disadvantaged		11.4%	35.1%	39.4%	13.9%	0.2%
	All Jeffco Students	2007-2008	5.6%	20.7%	40.9%	32.7%	0.1%
		2006-2007	4.8%	23.0%	46.8%	25.2%	0.2%
All Colorado Students	2007-2008	8.0%	22.0%	40.0%	30.0%	0.0%	
	2006-2007	7.0%	24.0%	43.0%	25.0%	0.0%	

test scores & performance ratings continued

CSAP scores continued

Grade 4 Math	Group	Year	Unsatisfactory	Partially Proficient	Proficient	Advanced	No Scores
	Female	2007-2008	6.7%	23.2%	44.9%	25.0%	0.2%
	Male		6.5%	20.6%	46.7%	26.1%	0.2%
	American Indian		8.0%	36.0%	45.3%	10.7%	0.0%
	Asian		3.3%	14.8%	41.2%	40.7%	0.0%
	Black		15.9%	25.8%	43.2%	14.4%	0.8%
	Hispanic		13.1%	33.7%	41.6%	11.4%	0.2%
	White		4.6%	18.6%	47.3%	29.3%	0.2%
	Non English Proficient		41.0%	36.6%	18.7%	3.7%	0.0%
	Limited English Proficient		12.8%	46.3%	34.8%	5.7%	0.4%
	Special Education		28.4%	37.9%	28.9%	4.4%	0.5%
	Gifted/Talented		0.2%	1.6%	25.0%	73.3%	0.0%
	Economically Disadvantaged		13.6%	35.5%	40.9%	9.9%	0.2%
	All Jeffco Students	2007-2008	6.6%	21.9%	45.8%	25.6%	0.2%
		2006-2007	6.9%	19.6%	46.6%	26.7%	0.3%
All Colorado Students	2007-2008	9.0%	23.0%	42.0%	26.0%	0.0%	
	2006-2007	9.0%	21.0%	43.0%	27.0%	0.0%	

Grade 5 Math	Group	Year	Unsatisfactory	Partially Proficient	Proficient	Advanced	No Scores
	Female	2007-2008	5.6%	24.7%	39.8%	29.6%	0.3%
	Male		6.5%	23.1%	36.5%	33.7%	0.2%
	American Indian		12.0%	22.7%	38.7%	26.7%	0.0%
	Asian		4.3%	13.4%	39.0%	42.5%	0.8%
	Black		12.1%	43.1%	33.6%	11.2%	0.0%
	Hispanic		12.9%	37.7%	34.8%	14.3%	0.3%
	White		4.1%	20.4%	39.1%	36.2%	0.2%
	Non English Proficient		43.1%	34.3%	12.7%	5.9%	3.9%
	Limited English Proficient		16.1%	52.9%	24.7%	6.3%	0.0%
	Special Education		27.1%	42.2%	23.1%	6.9%	0.8%
	Gifted/Talented		0.0%	1.0%	15.9%	83.1%	0.0%
	Economically Disadvantaged		13.8%	38.5%	34.8%	12.6%	0.4%
	All Jeffco Students	2007-2008	6.1%	23.9%	38.1%	31.7%	0.2%
		2006-2007	9.1%	24.1%	35.2%	31.4%	0.2%
All Colorado Students	2007-2008	8.0%	26.0%	37.0%	28.0%	0.0%	
	2006-2007	11.0%	24.0%	35.0%	30.0%	0.0%	

Grade 6 Math	Group	Year	Unsatisfactory	Partially Proficient	Proficient	Advanced	No Scores
	Female	2007-2008	8.6%	24.5%	40.2%	26.4%	0.2%
	Male		10.0%	22.6%	37.2%	30.0%	0.3%
	American Indian		10.1%	33.3%	34.8%	20.3%	1.4%
	Asian		5.6%	15.9%	34.1%	43.5%	0.9%
	Black		22.3%	36.5%	30.4%	10.1%	0.7%
	Hispanic		19.5%	34.6%	32.9%	12.8%	0.2%
	White		6.5%	20.5%	40.7%	32.0%	0.2%
	Non English Proficient		44.6%	33.8%	16.2%	2.7%	2.7%
	Limited English Proficient		32.6%	39.6%	23.5%	3.9%	0.4%
	Special Education		38.9%	34.6%	21.3%	4.4%	0.8%
	Gifted/Talented		0.0%	2.0%	20.4%	77.6%	0.0%
	Economically Disadvantaged		20.1%	32.9%	34.8%	11.8%	0.4%
	All Jeffco Students	2007-2008	9.3%	23.5%	38.7%	28.2%	0.2%
		2006-2007	9.0%	22.4%	37.5%	30.8%	0.3%
All Colorado Students	2007-2008	13.0%	26.0%	37.0%	24.0%	0.0%	
	2006-2007	13.0%	26.0%	35.0%	25.0%	0.0%	

Grade 7 Math	Group	Year	Unsatisfactory	Partially Proficient	Proficient	Advanced	No Scores
	Female	2007-2008	13.1%	32.0%	32.1%	22.5%	0.4%
	Male		15.5%	29.7%	29.5%	25.1%	0.3%
	American Indian		31.8%	25.8%	21.2%	21.2%	0.0%
	Asian		6.7%	26.9%	28.4%	36.9%	1.1%
	Black		31.6%	42.1%	18.4%	7.9%	0.0%
	Hispanic		30.5%	40.4%	20.7%	8.1%	0.4%
	White		10.4%	28.6%	33.6%	27.1%	0.3%
	Non English Proficient		59.2%	29.6%	4.2%	7.0%	0.0%
	Limited English Proficient		49.3%	40.5%	8.3%	2.0%	0.0%
	Special Education		53.8%	30.3%	10.5%	4.8%	0.6%
	Gifted/Talented		0.6%	3.9%	22.5%	72.6%	0.3%
	Economically Disadvantaged		31.0%	41.6%	20.6%	6.4%	0.3%
	All Jeffco Students	2007-2008	14.3%	30.8%	30.7%	23.8%	0.3%
		2006-2007	10.0%	32.1%	32.4%	25.3%	0.3%
All Colorado Students	2007-2008	18.0%	35.0%	28.0%	18.0%	1.0%	
	2006-2007	14.0%	35.0%	30.0%	21.0%	1.0%	

Grade 8 Math	Group	Year	Unsatisfactory	Partially Proficient	Proficient	Advanced	No Scores
	Female	2007-2008	15.8%	28.9%	30.2%	24.5%	0.6%
	Male		15.6%	25.8%	28.9%	28.9%	0.8%
	American Indian		24.0%	39.4%	16.3%	20.2%	0.0%
	Asian		9.3%	22.5%	28.2%	38.8%	1.3%
	Black		37.0%	34.8%	21.0%	5.8%	1.4%
	Hispanic		32.2%	33.6%	23.3%	10.1%	0.7%
	White		11.6%	25.7%	31.5%	30.5%	0.7%
	Non English Proficient		73.3%	13.3%	8.9%	4.4%	0.0%
	Limited English Proficient		46.2%	38.6%	12.7%	2.0%	0.5%
	Special Education		57.7%	25.3%	12.1%	2.9%	2.0%
	Gifted/Talented		0.4%	3.3%	21.5%	74.3%	0.4%
	Economically Disadvantaged		33.8%	34.3%	22.4%	9.0%	0.5%
	All Jeffco Students	2007-2008	15.7%	27.4%	29.5%	26.7%	0.7%
		2006-2007	15.4%	29.0%	32.7%	22.3%	0.6%
All Colorado Students	2007-2008	23.0%	30.0%	27.0%	20.0%	1.0%	
	2006-2007	22.0%	31.0%	29.0%	17.0%	1.0%	

Grade 9 Math	Group	Year	Unsatisfactory	Partially Proficient	Proficient	Advanced	No Scores
	Female	2007-2008	22.6%	30.4%	29.0%	16.7%	1.2%
	Male		21.6%	27.3%	30.8%	19.1%	1.3%
	American Indian		35.3%	28.2%	23.5%	10.6%	2.4%
	Asian		14.9%	20.8%	32.2%	30.2%	2.0%
	Black		44.1%	36.4%	13.6%	4.2%	1.7%
	Hispanic		42.6%	31.8%	17.1%	5.7%	2.7%
	White		16.5%	28.2%	33.5%	21.0%	0.8%
	Non English Proficient		73.0%	10.8%	3.6%	0.0%	12.6%
	Limited English Proficient		64.0%	24.7%	7.3%	1.7%	2.2%
	Special Education		63.4%	22.6%	9.1%	2.5%	2.3%
	Gifted/Talented		1.0%	4.4%	31.7%	62.6%	0.4%
	Economically Disadvantaged		41.9%	33.5%	17.4%	5.3%	2.0%
	All Jeffco Students	2007-2008	22.1%	28.8%	29.9%	17.9%	1.3%
		2006-2007	25.1%	29.3%	29.7%	14.7%	1.2%
All Colorado Students	2007-2008	30.0%	30.0%	24.0%	13.0%	2.0%	
	2006-2007	33.0%	30.0%	24.0%	11.0%	2.0%	

test scores & performance ratings continued

CSAP scores continued

Grade 10 Math	Group	Year	Unsatisfactory	Partially Proficient	Proficient	Advanced	No Scores
	Female	2007-2008	21.9%	36.9%	33.5%	5.7%	2.0%
	Male		23.4%	32.9%	34.0%	7.8%	2.0%
	American Indian		28.0%	41.3%	28.0%	1.3%	1.3%
	Asian		16.2%	27.9%	40.2%	14.0%	1.7%
	Black		38.2%	34.4%	22.9%	0.8%	3.8%
	Hispanic		43.3%	36.0%	15.8%	1.9%	3.0%
	White		17.7%	34.8%	38.0%	7.8%	1.8%
	Non English Proficient		71.1%	12.0%	3.6%	1.2%	12.0%
	Limited English Proficient		61.9%	28.4%	4.5%	0.6%	4.5%
	Special Education		68.1%	19.4%	6.7%	0.4%	5.4%
	Gifted/Talented		1.6%	8.6%	58.3%	31.4%	0.1%
	Economically Disadvantaged		46.3%	31.5%	16.7%	1.9%	3.6%
All Jeffco Students	2007-2008	22.7%	34.8%	33.7%	6.7%	2.0%	
	2006-2007	25.7%	33.4%	32.8%	6.3%	1.8%	
All Colorado Students	2007-2008	32.0%	35.0%	25.0%	5.0%	3.0%	
	2006-2007	33.0%	34.0%	25.0%	5.0%	3.0%	

Grade 5 Science	Group	Year	Unsatisfactory	Partially Proficient	Proficient	Advanced	No Scores
	Female	2007-2008	9.4%	42.0%	37.0%	11.3%	0.2%
	Male		9.2%	36.2%	38.1%	16.3%	0.2%
	American Indian		18.7%	34.7%	30.7%	16.0%	0.0%
	Asian		6.7%	45.1%	32.5%	15.3%	0.4%
	Black		17.4%	60.0%	19.1%	3.5%	0.0%
	Hispanic		22.5%	53.3%	20.2%	3.8%	0.3%
	White		5.6%	34.5%	43.0%	16.7%	0.2%
	Non English Proficient		67.0%	25.2%	3.9%	0.0%	3.9%
	Limited English Proficient		37.4%	59.0%	3.2%	0.5%	0.0%
	Special Education		33.2%	45.7%	16.8%	3.4%	0.9%
	Gifted/Talented		0.4%	5.9%	42.1%	51.7%	0.0%
	Economically Disadvantaged		21.8%	55.5%	19.6%	2.9%	0.3%
All Jeffco Students	2007-2008	9.3%	39.0%	37.6%	13.9%	0.2%	
All Colorado Students	2007-2008	15.0%	41.0%	33.0%	11.0%	0.0%	

Grade 8 Science	Group	Year	Unsatisfactory	Partially Proficient	Proficient	Advanced	No Scores
	Female	2007-2008	16.1%	27.1%	46.1%	9.8%	0.8%
	Male		15.8%	22.2%	46.3%	14.4%	1.2%
	American Indian		19.2%	37.5%	31.7%	9.6%	1.9%
	Asian		14.1%	19.8%	51.1%	14.1%	0.9%
	Black		38.4%	31.2%	26.8%	2.2%	1.4%
	Hispanic		35.0%	32.4%	28.5%	3.1%	1.0%
	White		11.1%	22.7%	50.8%	14.4%	1.0%
	Non English Proficient		86.7%	11.1%	2.2%	0.0%	0.0%
	Limited English Proficient		62.4%	26.4%	10.2%	0.5%	0.5%
	Special Education		51.3%	26.5%	17.5%	1.8%	2.8%
	Gifted/Talented		0.3%	3.9%	52.0%	43.0%	0.8%
	Economically Disadvantaged		35.5%	32.0%	29.4%	2.2%	0.8%
All Jeffco Students	2007-2008	15.9%	24.6%	46.2%	12.2%	1.0%	
All Colorado Students	2007-2008	25.0%	28.0%	39.0%	7.0%	1.0%	

Grade 10 Science	Group	Year	Unsatisfactory	Partially Proficient	Proficient	Advanced	No Scores
	Female	2007-2008	20.6%	23.6%	48.4%	4.9%	2.5%
	Male		23.9%	19.9%	44.7%	9.2%	2.3%
	American Indian		28.0%	25.3%	44.0%	1.3%	1.3%
	Asian		20.4%	20.9%	48.3%	8.3%	2.2%
	Black		36.6%	25.2%	32.1%	2.3%	3.8%
	Hispanic		44.2%	25.3%	24.3%	1.9%	4.2%
	White		16.8%	20.7%	52.1%	8.4%	2.0%
	Non English Proficient		81.9%	3.6%	1.2%	0.0%	13.3%
	Limited English Proficient		70.5%	17.9%	3.8%	0.0%	7.7%
	Special Education		64.3%	15.4%	13.6%	1.2%	5.6%
	Gifted/Talented		2.0%	3.2%	63.2%	31.3%	0.2%
	Economically Disadvantaged		46.8%	22.3%	24.7%	2.0%	4.3%
	All Jeffco Students	2007-2008	22.3%	21.7%	46.6%	7.1%	2.4%
All Colorado Students	2007-2008	27.0%	23.0%	41.0%	6.0%	3.0%	

Migrant student scores are not reported because the student population is too small (<16 students).

Grades 5, 8 and 10 CSAP Science scores for 2008 cannot be trended with previous years due to 2008 revised Science standards and CSAP scale scores. Therefore, no CSAP Science trends are reflected in this report.

Economically Disadvantaged as determined by students qualifying for the Free and Reduced Meal Program.

To see CSAP scores for the past 10 years visit the Colorado Department of Education Web site at http://www.cde.state.co.us/cdeassess/documents/csap/csap_summary.html.



test scores & performance ratings *continued*

Colorado Growth Model

Colorado's Growth Model provides a way for educators and parents to understand how much academic growth a student made from one CSAP administration to the next. The Growth Model compares each student's performance to students in the same grade throughout Colorado who had similar CSAP scores in past years, and calculates a Student Growth Percentile. For example, if the student grew academically as much or more than 60 percent of his or her peers, the student would have a 60th Growth Percentile. For schools, CDE reports the median growth percentile.

Median Student Growth Percentiles for Jeffco Public Schools

	Reading			Writing			Math		
	2006	2007	2008	2006	2007	2008	2006	2007	2008
Elementary School(s)	51	54	54	52	49	52	52	50	54
Middle School(s)	45	48	50	47	48	46	50	51	56
High School(s)	43	50	51	47	51	52	49	50	56
Grade 4	52	56	52	53	51	52	47	45	49
Grade 5	47	47	49	48	45	49	50	48	55
Grade 6	53	58	60	56	51	56	58	57	58
Grade 7	45	48	47	47	48	47	50	51	54
Grade 8	44	48	53	46	49	45	49	52	58
Grade 9	44	49	51	47	50	49	48	49	55
Grade 10	43	50	50	48	52	55	51	51	58

Bold type indicates the segment meets or exceeds state median growth percentile of 50 and higher.



Catch up and Keep Up

Student Growth Percentiles can be used to determine “How much growth is enough?” specifying the amount of growth necessary for each student to reach proficiency (*“catch up”*) or maintain proficiency (*“keep up”*) within three years or by 10th grade. The Colorado Department of Education’s Web site provides additional information about the amount of growth necessary for each student to reach and maintain proficiency at: <http://www.cde.state.co.us/districtprofiles.asp>.

Median Student Growth Percentiles for Jeffco Public Schools

	Reading		Writing		Math	
	2007	2008	2007	2008	2007	2008
% on Track to Catch Up						
Low Income	31.0	30.2	24.2	22.2	13.8	14.1
Minority	31.3	31.7	25.0	22.4	14.4	14.0
Boys	34.5	32.0	27.3	25.7	16.5	16.4
Girls	40.5	40.1	35.3	31.4	15.9	15.8
% on Track to Keep Up						
Low Income	68.5	76.3	54.1	63.8	45.7	56.8
Minority	73.7	81.1	64.2	72.0	54.7	64.1
Boys	78.3	83.4	66.0	74.1	64.2	71.9
Girls	85.1	89.2	75.9	81.1	62.5	70.3
Elementary School Students						
% on track to Catch Up	43.7	39.1	41.0	37.7	30.3	27.2
% on track to Keep Up	80.3	84.7	71.4	79.4	67.1	74.2
Middle School Students						
% on track to Catch Up	41.0	35.3	29.9	22.1	16.8	15.8
% on track to Keep Up	81.3	84.4	68.8	72.6	58.7	66.9
High School Students						
% on track to Catch Up	23.8	30.6	17.8	19.7	5.0	7.5
% on track to Keep Up	86.3	90.8	76.4	82.6	61.5	71.1



test scores & performance ratings *continued*

ACT Test Scores

The ACT is traditionally a college entrance examination. Colorado law requires all high school juniors to take an ACT test designed especially for Colorado students to measure progress in English, reading, math and science. The ACT is scored on a scale of 1 to 36.

Group	Mean Composite	Number Tested
Female	21.2	3,072
Male	20.9	3,004
American Indian/Alaskan	17.4	115
Asian American/Pacific Islander	20.0	189
African American/Black	17.4	58
Hispanic	18.0	626
Caucasian-American/White	21.9	3,330
Other/No Response	20.8	1,807
Jeffco	21.0	6,125
Colorado	20.2	49,454

Group	Mean Composite	Number Tested
Female	21.4	3,016
Male	20.9	2,869
American Indian/Alaskan	18.6	93
Asian American/Pacific Islander	21.6	176
African American/Black	19.5	63
Hispanic	18.5	540
Caucasian-American/White	22.1	3,509
Other/No Response	20.1	1,581
Jeffco	21.1	5,962
Colorado	20.5	50,420
National	21.1	1,421,941

SAT Test Scores

More than two million students take the SAT every year as part of a college entrance process. The SAT, given by the College Board, is a 3 hour and 45 minute test that measures the critical thinking, mathematical reasoning, and writing skills that students need to do college-level work. The test is scored at a maximum of 800 points per section, with a total possible score of 1,600.

Group	Reading	Math	Writing	# Tested
Female	578	582	575	497
Male	578	609	554	370
Asian, Asian American or Pacific Islander	568	648	563	47
Mexican or Mexican American	551	551	559	18
Other Hispanic, Latino, or Latin American	561	582	542	28
White	579	593	567	712
Jeffco	578	594	566	867
Colorado	564	570	553	10,510
National	502	515	494	1,518,859



test scores & performance ratings *continued*

Colorado English Language Assessment (CELA)

Federal and state legislation have mandated a new English proficiency test, the CELA (*Colorado English Language Assessment*). All kindergarten through twelfth grade students, who have been identified as having a language background other than English, in Colorado participate in a statewide assessment in the areas of English proficiency in reading, writing, speaking, listening and comprehension.

Kindergarten	Group	Year	Beginning	Early Intermediate	Intermediate	Proficient	Advanced	No Scores	# Tested
	Female	2007-2008	40%	35%	15%	5%	0%	5%	316
	Male		41%	37%	12%	2%	0%	8%	360
	Asian		22%	32%	28%	10%	0%	7%	108
	Hispanic		48%	36%	8%	1%	0%	7%	457
	White		28%	40%	19%	7%	1%	5%	102
	Non. Eng. Prof.		46%	34%	11%	2%	0%	7%	591
	Limited Eng. Prof.		5%	48%	29%	16%	1%	0%	85
	Special Education		61%	27%	3%	0%	0%	9%	33
	Free and Reduced Lunch		47%	39%	7%	2%	0%	5%	379
	All Jeffco Students		2007-2008	40%	36%	13%	4%	0%	7%
		2006-2007	44%	25%	9%	2%	0%	20%	701
All Colorado Students	2007-2008	47%	29%	9%	1%	0%	14%	11,819	
	2006-2007	51%	22%	8%	1%	0%	18%	12,278	

Grade 1	Group	Year	Beginning	Early Intermediate	Intermediate	Proficient	Advanced	No Scores	# Tested
	Female	2007-2008	6%	17%	38%	32%	5%	1%	354
	Male		9%	22%	36%	29%	2%	2%	403
	Asian		1%	10%	26%	52%	9%	2%	116
	Hispanic		10%	25%	40%	23%	1%	1%	502
	White		5%	10%	35%	37%	9%	3%	124
	Non. Eng. Prof.		8%	22%	39%	27%	2%	2%	689
	Limited Eng. Prof.		0%	3%	13%	59%	24%	1%	68
	Special Education		29%	26%	33%	5%	0%	7%	42
	Free and Reduced Lunch		9%	23%	40%	23%	2%	2%	522
	All Jeffco Students		2007-2008	8%	20%	37%	30%	4%	2%
		2006-2007	10%	23%	35%	26%	3%	3%	651
All Colorado Students	2007-2008	11%	26%	37%	20%	2%	4%	12,301	
	2006-2007	16%	27%	36%	17%	2%	30%	11,878	



CELA scores continued

Grade 2	Group	Year	Beginning	Early Intermediate	Intermediate	Proficient	Advanced	No Scores	# Tested
	Female	2007-2008	7%	18%	36%	32%	4%	3%	250
	Male		10%	23%	31%	30%	4%	1%	264
	Asian		1%	18%	35%	39%	5%	1%	74
	Hispanic		11%	22%	33%	29%	3%	2%	352
	White		5%	19%	33%	34%	6%	3%	79
	Non. Eng. Prof.		16%	37%	30%	13%	2%	3%	264
	Limited Eng. Prof.		0%	4%	38%	50%	6%	2%	250
	Special Education		22%	44%	17%	14%	0%	3%	36
	Free and Reduced Lunch		11%	23%	35%	25%	3%	3%	363
All Jeffco Students	2007-2008	8%	21%	34%	31%	4%	2%	514	
	2006-2007	7%	20%	32%	35%	3%	2%	512	
All Colorado Students	2007-2008	11%	23%	34%	28%	3%	2%	10,939	
	2006-2007	13%	23%	32%	27%	3%	2%	10,031	

Grade 3	Group	Year	Beginning	Early Intermediate	Intermediate	Proficient	Advanced	No Scores	# Tested
	Female	2007-2008	7%	15%	34%	35%	7%	2%	182
	Male		4%	17%	40%	32%	6%	1%	238
	Asian		6%	10%	29%	40%	13%	2%	62
	Hispanic		6%	17%	42%	31%	3%	2%	313
	White		3%	22%	19%	35%	19%	3%	37
	Non. Eng. Prof.		13%	36%	35%	9%	3%	4%	176
	Limited Eng. Prof.		0%	2%	39%	50%	8%	0%	244
	Special Education		16%	24%	39%	5%	8%	8%	38
	Free and Reduced Lunch		6%	19%	40%	30%	4%	1%	318
All Jeffco Students	2007-2008	5%	16%	37%	33%	6%	2%	420	
	2006-2007	7%	10%	33%	38%	10%	1%	465	
All Colorado Students	2007-2008	7%	18%	35%	32%	7%	2%	9,006	
	2006-2007	10%	17%	33%	31%	7%	2%	9,292	

Grade 4	Group	Year	Beginning	Early Intermediate	Intermediate	Proficient	Advanced	No Scores	# Tested
	Female	2007-2008	4%	16%	25%	43%	11%	1%	159
	Male		3%	8%	29%	50%	7%	1%	201
	Asian		3%	11%	19%	56%	11%	0%	36
	Hispanic		4%	12%	30%	44%	8%	1%	278
	White		2%	9%	14%	58%	14%	2%	43
	Non. Eng. Prof.		10%	28%	33%	22%	4%	1%	135
	Limited Eng. Prof.		0%	2%	23%	62%	12%	1%	225
	Special Education		2%	32%	34%	27%	5%	0%	44
	Free and Reduced Lunch		4%	12%	30%	46%	7%	1%	283
All Jeffco Students	2007-2008	4%	12%	27%	47%	9%	1%	360	
	2006-2007	5%	13%	30%	47%	4%	1%	372	
All Colorado Students	2007-2008	5%	14%	31%	42%	6%	2%	7,703	
	2006-2007	7%	15%	32%	40%	4%	2%	7,781	

test scores & performance ratings continued

CELA scores continued

Grade 5	Group	Year	Beginning	Early Intermediate	Intermediate	Proficient	Advanced	No Scores	# Tested
	Female	2007-2008	4%	4%	24%	51%	15%	1%	144
	Male		5%	5%	24%	56%	10%	0%	183
	Asian		2%	4%	18%	52%	22%	2%	50
	Hispanic		4%	5%	26%	55%	9%	0%	238
	White		12%	6%	18%	50%	15%	0%	34
	Non. Eng. Prof.		15%	16%	44%	21%	3%	2%	103
	Limited Eng. Prof.		0%	0%	15%	69%	16%	0%	224
	Special Education		6%	8%	46%	40%	0%	0%	48
	Free and Reduced Lunch		5%	5%	26%	54%	11%	0%	242
All Jeffco Students	2007-2008	5%	5%	24%	54%	12%	1%	327	
	2006-2007	5%	8%	23%	51%	10%	2%	354	
All Colorado Students	2007-2008	4%	8%	23%	50%	13%	2%	6,583	
	2006-2007	5%	10%	24%	49%	10%	1%	6,836	

Grade 6	Group	Year	Beginning	Early Intermediate	Intermediate	Proficient	Advanced	No Scores	# Tested
	Female	2007-2008	4%	5%	24%	53%	14%	0%	135
	Male		5%	5%	28%	50%	12%	1%	169
	Asian		9%	0%	22%	58%	11%	0%	45
	Hispanic		3%	7%	30%	49%	11%	0%	213
	White		3%	3%	11%	58%	26%	0%	38
	Non. Eng. Prof.		18%	17%	40%	19%	6%	0%	72
	Limited Eng. Prof.		0%	1%	22%	62%	15%	0%	232
	Special Education		0%	11%	33%	49%	7%	0%	45
	Free and Reduced Lunch		4%	6%	28%	52%	10%	0%	243
All Jeffco Students	2007-2008	4%	5%	26%	52%	13%	0%	304	
	2006-2007	3%	6%	29%	54%	6%	2%	329	
All Colorado Students	2007-2008	5%	10%	30%	43%	10%	3%	5,336	
	2006-2007	7%	9%	32%	43%	6%	2%	5,440	

Grade 7	Group	Year	Beginning	Early Intermediate	Intermediate	Proficient	Advanced	No Scores	# Tested
	Female	2007-2008	4%	4%	20%	49%	21%	3%	112
	Male		2%	2%	9%	65%	20%	1%	161
	Asian		8%	0%	16%	41%	33%	2%	49
	Hispanic		2%	3%	15%	63%	16%	2%	184
	White		3%	6%	6%	57%	26%	3%	35
	Non. Eng. Prof.		11%	11%	25%	42%	4%	7%	72
	Limited Eng. Prof.		0%	0%	9%	64%	26%	0%	201
	Special Education		0%	2%	26%	59%	11%	2%	46
	Free and Reduced Lunch		4%	3%	14%	60%	19%	1%	192
All Jeffco Students	2007-2008	3%	3%	14%	58%	21%	2%	273	
	2006-2007	2%	4%	19%	58%	14%	2%	228	
All Colorado Students	2007-2008	6%	8%	23%	45%	16%	3%	4,616	
	2006-2007	7%	8%	24%	48%	10%	3%	4,867	

CELA scores continued

Grade 8	Group	Year	Beginning	Early Intermediate	Intermediate	Proficient	Advanced	No Scores	# Tested
	Female	2007-2008	3%	6%	13%	47%	30%	1%	112
	Male		4%	2%	12%	48%	32%	1%	130
	Asian		6%	9%	24%	35%	26%	0%	34
	Hispanic		2%	4%	11%	53%	30%	1%	171
	White		6%	3%	6%	36%	45%	3%	33
	Non. Eng. Prof.		16%	18%	33%	27%	4%	2%	49
	Limited Eng. Prof.		0%	1%	7%	53%	38%	1%	193
	Special Education		7%	5%	19%	50%	14%	5%	42
	Free and Reduced Lunch		4%	5%	13%	50%	27%	1%	180
All Jeffco Students	2007-2008	3%	4%	12%	48%	31%	1%	242	
	2006-2007	2%	5%	15%	55%	17%	6%	214	
All Colorado Students	2007-2008	6%	7%	18%	44%	20%	4%	3,955	
	2006-2007	7%	7%	23%	47%	12%	3%	4,341	

Grade 9	Group	Year	Beginning	Early Intermediate	Intermediate	Proficient	Advanced	No Scores	# Tested
	Female	2007-2008	7%	8%	30%	42%	5%	8%	133
	Male		8%	11%	20%	43%	7%	10%	171
	Asian		20%	3%	33%	33%	10%	0%	30
	Hispanic		6%	11%	24%	45%	5%	9%	235
	White		6%	9%	20%	43%	9%	14%	35
	Non. Eng. Prof.		19%	20%	27%	20%	2%	14%	123
	Limited Eng. Prof.		0%	3%	23%	59%	9%	6%	181
	Special Education		3%	27%	27%	33%	0%	10%	30
	Free and Reduced Lunch		5%	8%	28%	46%	6%	7%	171
All Jeffco Students	2007-2008	8%	10%	25%	43%	6%	9%	304	
	2006-2007	11%	13%	32%	33%	4%	6%	239	
All Colorado Students	2007-2008	8%	12%	31%	35%	4%	9%	4,076	
	2006-2007	11%	12%	31%	36%	4%	7%	4,420	

Grade 10	Group	Year	Beginning	Early Intermediate	Intermediate	Proficient	Advanced	No Scores	# Tested
	Female	2007-2008	6%	8%	20%	46%	9%	11%	118
	Male		5%	9%	29%	45%	5%	5%	128
	Asian		10%	17%	37%	30%	3%	3%	30
	Hispanic		5%	6%	22%	49%	8%	9%	188
	White		5%	18%	23%	32%	9%	14%	22
	Non. Eng. Prof.		15%	20%	27%	24%	1%	12%	91
	Limited Eng. Prof.		0%	2%	23%	58%	11%	6%	155
	Special Education		10%	23%	30%	30%	0%	7%	30
	Free and Reduced Lunch		5%	9%	27%	47%	7%	6%	152
All Jeffco Students	2007-2008	6%	9%	25%	46%	7%	8%	246	
	2006-2007	11%	9%	26%	41%	7%	6%	213	
All Colorado Students	2007-2008	6%	10%	26%	40%	6%	11%	3,333	
	2006-2007	10%	10%	29%	39%	6%	6%	3,547	

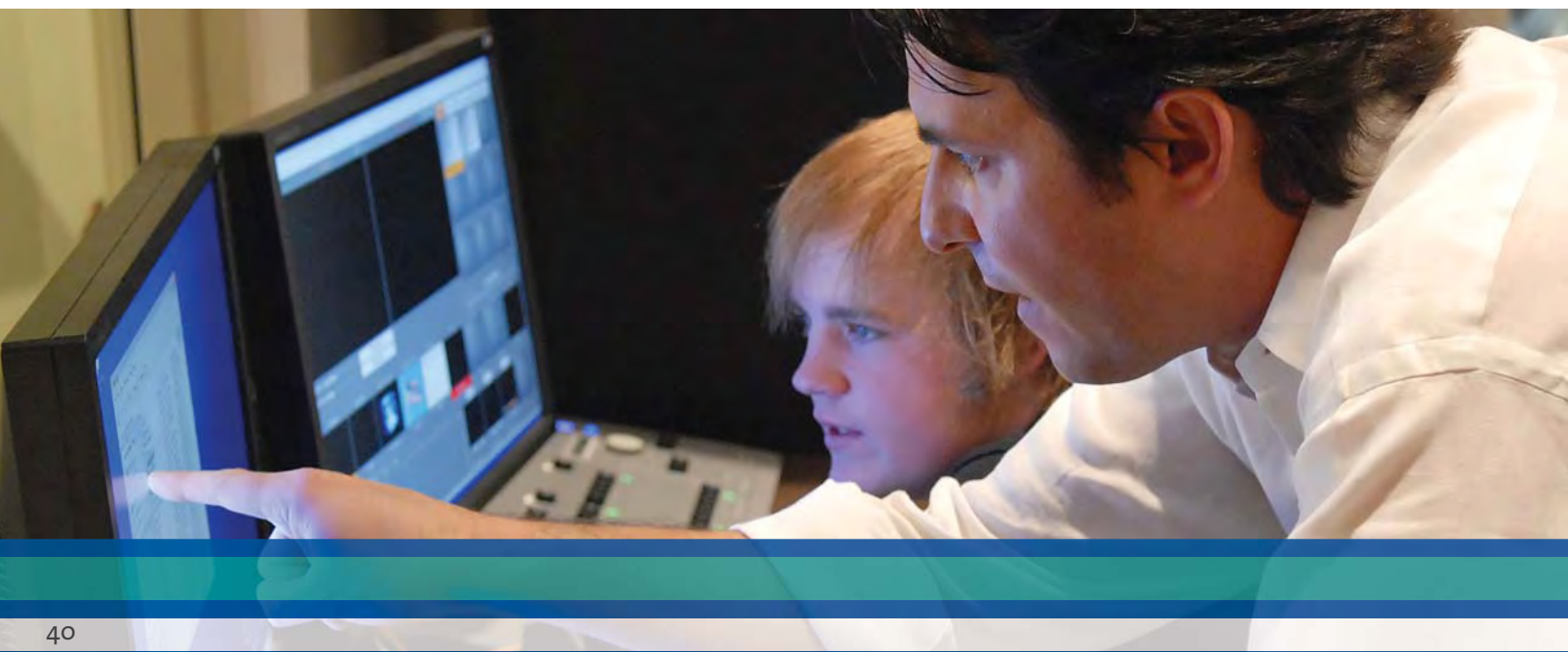
test scores & performance ratings *continued*

CELA scores continued

Grade 11	Group	Year	Beginning	Early Intermediate	Intermediate	Proficient	Advanced	No Scores	# Tested
	Female	2007-2008	3%	12%	31%	32%	12%	10%	93
	Male		4%	10%	22%	50%	9%	5%	117
	Asian		6%	17%	34%	34%	9%	0%	35
	Hispanic		3%	11%	23%	42%	10%	10%	146
	White		4%	4%	31%	46%	12%	4%	26
	Non. Eng. Prof.		11%	31%	32%	17%	3%	7%	75
	Limited Eng. Prof.		0%	0%	23%	56%	14%	7%	135
	Free and Reduced Lunch		3%	9%	25%	48%	7%	8%	120
	All Jeffco Students	2007-2008	4%	11%	26%	42%	10%	7%	210
	2006-2007	11%	11%	27%	39%	6%	5%	174	
All Colorado Students	2007-2008	6%	11%	26%	38%	9%	11%	2,640	
	2006-2007	7%	11%	28%	39%	6%	8%	2,564	

Grade 12	Group	Year	Beginning	Early Intermediate	Intermediate	Proficient	Advanced	No Scores	# Tested
	Female	2007-2008	4%	14%	30%	37%	9%	7%	57
	Male		4%	12%	25%	36%	12%	10%	91
	Asian		4%	20%	40%	28%	8%	0%	25
	Hispanic		5%	10%	21%	39%	13%	13%	96
	White		0%	17%	38%	33%	8%	4%	24
	Non. Eng. Prof.		11%	30%	36%	13%	4%	7%	56
	Limited Eng. Prof.		0%	2%	22%	51%	15%	10%	92
	Special Education		0%	17%	33%	33%	0%	17%	18
	Free and Reduced Lunch		4%	16%	26%	39%	8%	7%	76
All Jeffco Students	2007-2008	4%	13%	27%	36%	11%	9%	148	
	2006-2007	10%	19%	32%	24%	4%	11%	136	
All Colorado Students	2007-2008	4%	11%	26%	35%	8%	16%	2,073	
	2006-2007	7%	12%	32%	35%	5%	10%	2,014	

Overall Scale Score is an average of speaking, listening, reading and writing. Scores are reported only for groups of 16 or more students. Economically Disadvantaged as determined by students qualifying for the Free and Reduced Meal Program.

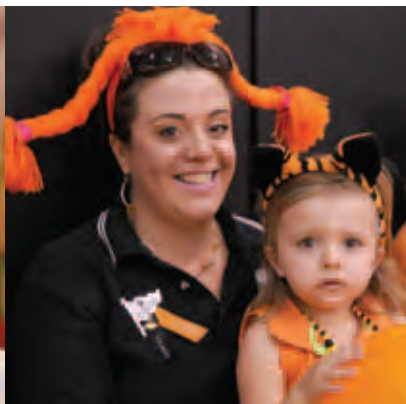




2007-08 Federal and State Reporting Requirements

Every year, school districts in Colorado report about their performance based on requirements in Colorado accreditation rules and the No Child Left Behind Act. This data, which includes assessment scores, accountability measures, teacher qualifications and other data for the district and for individual schools, has been compiled by the Colorado Department of Education on their Web site at: <http://www.cde.state.co.us/districtprofiles.asp>

Parents and community members are invited to review this Web site for more detailed information about Jeffco Public Schools' performance.



 JEFFCO PUBLIC SCHOOLS

Jeffco Public Schools • 1829 Denver West Drive #27 • Golden, CO 80401 • 303-982-6500 • www.jeffcopublicschools.org